



## 4 Chapel Close North Duffield, YO8 5RB Offers In The Region Of £525,000

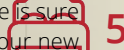
\*\* GOURMET CHEF'S KITCHEN, WITH TOP OF THE RANGE APPLIANCES \*\* and plentiful counter top work space in this exquisite modern detached house on Chapel Close, which offers a perfect blend of modern living and timeless elegance. Built in 2000, the property boasts a generous layout, featuring two spacious reception rooms that provide ample space for both relaxation and entertaining. With five well-appointed bedrooms, this home is ideal for families or those seeking extra room for guests or a home office.

The property is designed with three bathrooms, ensuring convenience for all residents. The expansive kitchen is a true highlight, offering a delightful space for culinary enthusiasts, while the separate utility room adds practicality to daily chores. Throughout the home, you will find artisan craftsmanship that enhances its character, complemented by a neutral decor that allows for personal touches and easy styling.

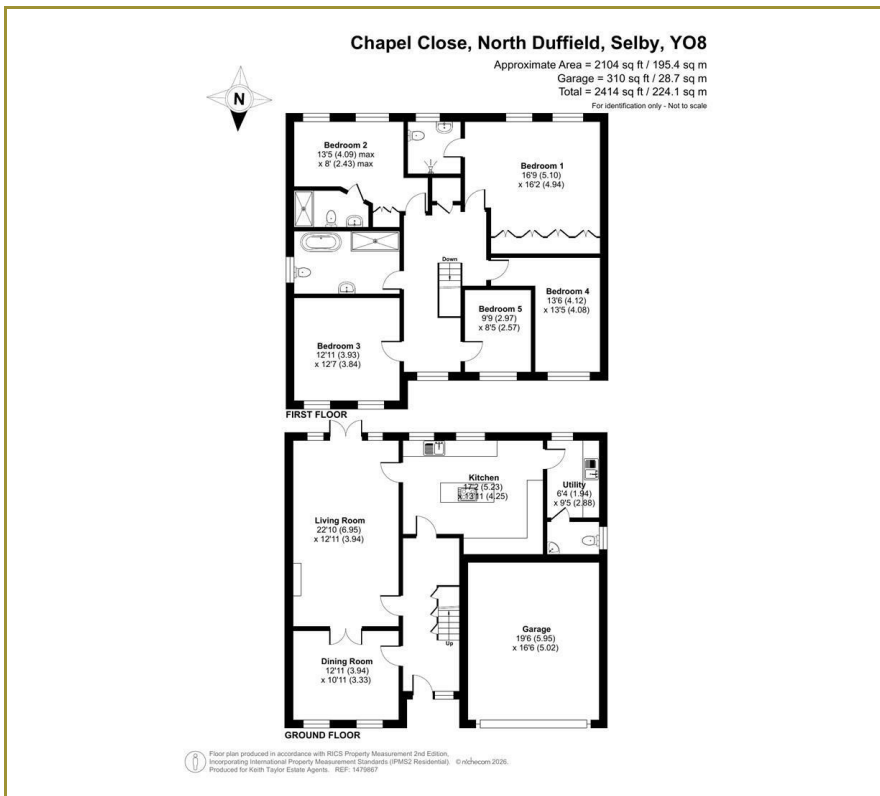
Parking is a breeze with space for up to four vehicles, making it perfect for families or those who enjoy hosting visitors. The location in North Duffield provides a peaceful setting while still being within easy reach of local amenities and transport links.

This property is a rare find, combining comfort, style, and functionality in a desirable area. Whether you are looking to settle down or invest, this home is sure to impress. Do not miss the opportunity to make this stunning house your new home.

- Executive Detached Family Home
- In a Glorious Village with a superb Neighbourly Feel
- Tucked Away Cul-De-Sac Location
- 5 Bedrooms
- 3 Bathrooms
- Stunning Interior
- Luxurious Fully Fitted German Kitchen
- Driveway Parking
- Double Garage
- Lovely Dog Walks and Countryside on Your Door Step!



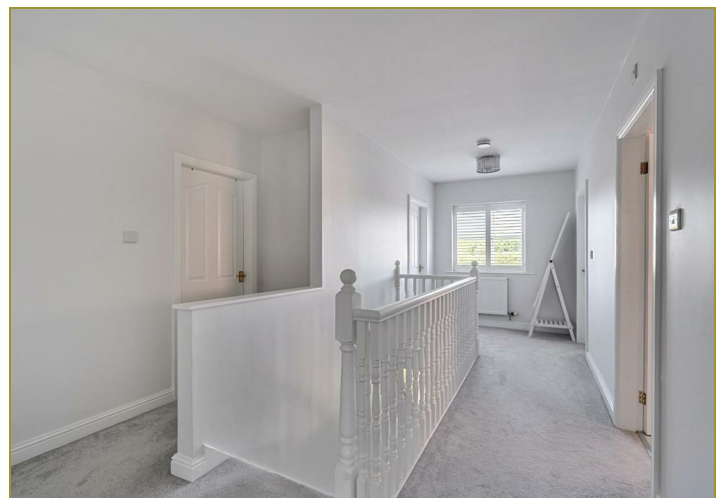
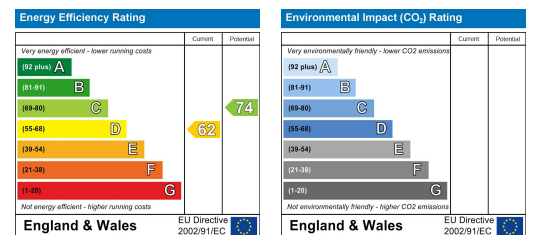
## Floor Plan



## Area Map



## Energy Efficiency Graph



These particulars, whilst believed to be accurate are set out as a general outline only for guidance and do not constitute any part of an offer or contract. Intending purchasers should not rely on them as statements of representation of fact, but must satisfy themselves by inspection or otherwise as to their accuracy. No person in this firm's employment has the authority to make or give any representation or warranty in respect of the property.

# Keith Taylor

56 Gowthorpe, Selby, North Yorkshire, YO8 4ET  
 Tel: 01757 709457 Email: sales@keithtaylorproperty.co.uk  
 www.keithtaylorproperties.co.uk